



Towards a Brighter Future for Care

Anna Severwright

Co-convenor, Social Care Future

**That's the social care future
we seek. #socialcarefuture**

socialcarefuture.blog

Why did we start SCF?



-
- A group of people are shown in a room with wood-paneled walls, clapping and smiling. In the foreground, a woman with blonde hair and a light pink blazer is clapping. Next to her is a woman with glasses and a dark patterned top, also clapping. To the right, a man with glasses and a dark shirt is clapping. Further right, another man with grey hair is clapping. In the background, a man is holding a baby. A rainbow is visible on a screen or wall in the background.



A stylized, minimalist illustration of a house. The house is composed of thick black outlines. It has a triangular roof with a chimney on the left side. The main body of the house is a rectangle with a smaller rectangle representing a door at the bottom center. The background is a solid light blue, and the ground at the bottom is a solid yellow.

That's the **#socialcarefuture** we want to see.
Share if you agree > socialcarefuture.blog

Opportunity

Crisis

Building a movement



The rainbow graphic consists of seven concentric bands, each representing a different level of support for older people. The bands are:

- Supporting people and families to stay well, connected to others and resilient** (outermost band, purple): Includes icons for Community Circles, The Cares Family, Compassionate Neighbours, Gig Buddies, Wellbeing Teams, and Altogether Better.
- Working with people who need extra support to do things they enjoy and to contribute** (red band): Includes icons for Community Circles, The Cares Family, Compassionate Neighbours, Gig Buddies, The Cares Family, Wellbeing Teams, and Oomph!
- Supporting people & families to carry on living well at home** (orange band): Includes icons for Community Catalysts, Micro-Enterprises, Altogether Better, Buurtzorg, Mrs. Rumbold, Mrs. Hackett, Wellbeing Teams, KeyRing, and Cycling 4 all.
- Developing new models for people who require accommodation and care** (yellow band): Includes icons for Shared Lives, Buurtzorg, Mrs. Hackett, KeyRing, and Tempo Time Credits.
- Working with people to regain independence** (green band): Includes icons for Shared Lives, Buurtzorg, Mrs. Hackett, KeyRing, and Tempo Time Credits.
- Supporting people to live well in care** (light blue band): Includes icons for Shared Lives, Buurtzorg, Mrs. Hackett, KeyRing, and Tempo Time Credits.
- Supporting people to live well in care** (innermost band, dark blue): Includes icons for Shared Lives, Buurtzorg, Mrs. Hackett, KeyRing, and Tempo Time Credits.

There are many community centred approaches out there: this is a tiny selection. More information can be found on the Think Local Act Personal website.

- Offer solutions
- Rebalance the power – ‘Reverse co-production’
- Be heard in the reform/co-vid debates
- Shape SCF’s work moving forward

The Inquiry Group



Ossie Stuart



Miro Griffiths



Katie Clarke



Chris Maddocks



Jordan Smith



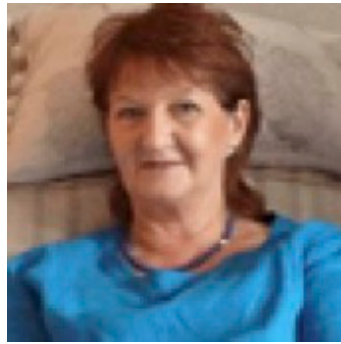
Lara Dowd



Issac Samuels



Meg Lewis



Lynn Elwell



Sally Percival



Scott Watkin



Clenton
Farquharson

The Inquiry



Whose Social Care is it Anyway?

From permanent lockdown to an equal life

#socialcarefuture



5 Key Changes to Unlock an Equal Life



1. Communities where everyone belongs
2. Living in the place we call home
3. Leading the lives we want to live
4. More resources, better used
5. Sharing power as equals



#socialcarefuture

The Future



“

**There is always light, if
only we're brave
enough to see it. If
only we're brave
enough to be it.**

Amanda Gorman

The youngest inaugural poet in US history



 USA TODAY

Contact details



@socfuture

@annaseverwright

#socialcarefuture



◆ socialcarefuture@gmail.com

◆ www.socialcarefuture.blog