

LTCCOVID LIVING INTERNATIONAL REPORT ON COVID-19 AND LONG-TERM CARE

**International workshop on COVID-19 and Long-Term Care systems:
What have we learnt and what policies do we need to strengthen LTC
systems?**

Adelina Comas-Herrera, 6th December 2021



INTERNATIONAL LONG TERM CARE POLICY NETWORK



nuffieldtrust

ACKNOWLEDGEMENTS:

This presentation draws on collaborative work with a large number of researchers who have contributed to analysis and reports through www.LTCCovid.org.

Any errors, omission and views expressed are my responsibility.

Support from by the National Institute for Health Research (NIHR) Policy Research Programme (NIHR202333), ILPN and CPEC (LSE) is gratefully acknowledged. The views expressed in this publication are those of the author(s) and not necessarily those of the NIHR, the Department of Health and of Social Care, the London School of Economics or the Nuffield Trust

THE “STORY” OF LTCCOVID.ORG

An amazing spontaneous collaboration, started in March 2020

Started as a blog, initially documenting early media evidence and reports putting events in the context of LTC systems

Supported by International Long-Term Care Policy Network/CPEC to develop the website and research assistance

Currently also supported through Social Care COVID Recover & Resilience project (NIHR-funded, until June 2022)

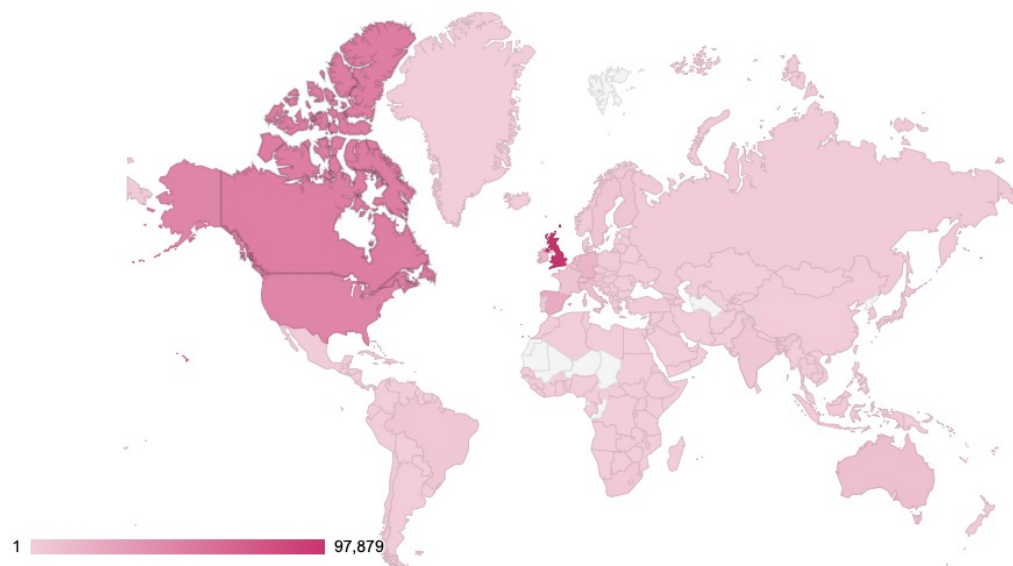
Growing number of publications from international collaborations (mortality, visiting, sector of ownership...)



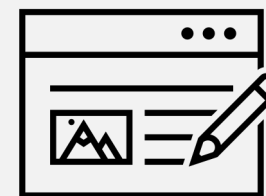
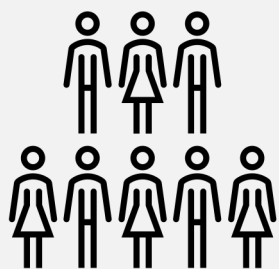
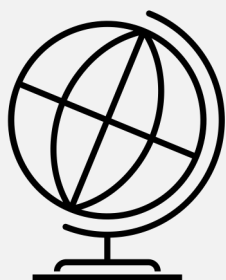
ALMOST GLOBAL REACH!

- 376,319 visits
- from 207 countries/territories
- 986 subscribers

Stats for All Time



WHAT'S IN LTCCOVID.ORG?





INTRODUCING:
LTCCOVID INTERNATIONAL LIVING REPORT
ON COVID-19 AND LONG-TERM CARE

A “wiki” style collaborative report that can be added to and updated directly by contributors

64 questions/topics that can be answered for every country/region in the world

Contributor profiles to recognize expertise and showcase other publications, etc.

Possibility to expand the questions in the living report to support other research collaborations

If you are interested in being a contributor, please email: a.comas@lse.ac.uk

QUESTIONS INFORMED BY:

- 33 LTCcovid country reports
- Social Care COVID-19 Recovery & Resilience Theory of Change
- Other literature on COVID-19 and LTC
- Inspiration from <https://eurohealthobservatory.who.int>



THEORY OF CHANGE TO MAP A PATH TOWARDS RECOVERY AND RESILIENCE

Social Care COVID Recovery and Resilience project

<https://ltccovid.org/project/social-care-covid-recovery-resiliencelearning-lessons-from-international-responses-to-the-covid-19-pandemic-in-long-term-care-systems/>

PROJECT AIMS:

To draw lessons for policy and practice from international Covid-19 experience & scientific evidence to support the English social care sector:

To **recover** from Covid-19 in the short-term

To be able to better **withstand** future waves of Covid-19/similar shocks in the medium-term

To become more **resilient** in the long-term

SOCIAL CARE COVID RECOVERY & RESILIENCE THEORY OF CHANGE

Theory of Change workshop with a wide range of stakeholders involved in social care in England (including experts by experience)

Mapping a path towards a situation in which:

- The social care sector in England is resilient and able to withstand ongoing and future shocks, and is well prepared for future infectious disease outbreaks
- People who are supported by LTC can recover from the impacts of the pandemic, can maintain their autonomy and are enabled to live independent and fulfilling lives
- Providers of LTC (including unpaid carers) can recover from the impacts of the pandemic and have a good quality of life & wellbeing, and decent work

SOCIAL CARE COVID RECOVERY & RESILIENCE: THEORY OF CHANGE MAP





INTERNATIONAL LIVING REPORT:

- Part 1 – Long-Term Care System characteristics and preparedness
- Part 2 – Impacts of the COVID-19 pandemic on people who use and provide Long-Term Care
- Part 3 – Measures adopted to minimize the impact the pandemic on people who use and provide Long-Term Care
- Part 4 – Reforms to address structural weaknesses of Long-Term Care systems and improve preparedness for future pandemics and other emergencies
- <https://ltccovid.org/international-living-report-covid-ltc/>

WHAT NEXT?

- How much can we complete?
 - 842 questions answered so far (many can be improved and updated)
 - If we had all questions for all countries in the world: 16,192 (not including sub-national!)... so 5.2% completed so far
- Hoping it will be useful to help people find your work
- And hoping it will contribute to the efforts, not only to mitigate the impacts of COVID, but to re-imagine and improve care by supporting learning from the experience of other countries